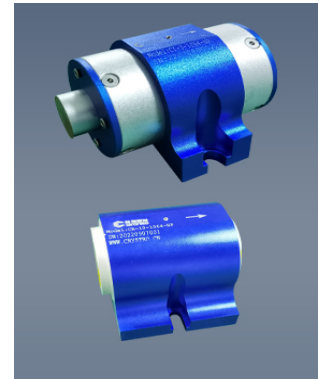


Faraday Rotator /Optical Isolator

Introduction:

Optical isolator, also known as Faraday isolator, is composed of input polarizer, rotator with magnet, and output polarator. It is a passive device that allows light to pass in one direction and prevents passing in the opposite direction, so that light can only be transmitted in a single direction, while the backward reflected light can be well isolated.

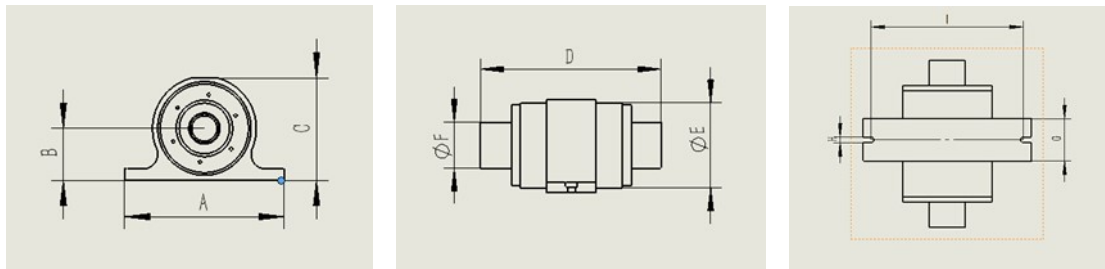


Typical Application:

- ◇ Laser precision processing
- ◇ Laser sensing system
- ◇ Ultra-fast laser system
- ◇ OCT system
- ◇ Laser detection

Reference Dimension :

For 1064nm wavelength only, other wavelengths please contact our sales Rep.



Unit(mm):

Aperture(mm)	A	B	C	D	E	F	G	H	I
3	55	22	43	73	38	12	25.4	6.6	50
5	55	22	43	73	38	12	25.4	6.6	50
8	102	40	79	101	54	22	25.4	6.6	92
10	102	40	79	101	54	22	25.4	6.6	92
12	102	40	79	101	54	22	25.4	6.6	92
20	130	42.3	83.3	161	76	41	44	6.6	110

Faraday Optical Isolator Specification:

(Both Faraday Rotator & Isolator available)

Model	Central Wavelength (nm)	Aperture (mm)	Peak Isolation (dB)	Transmission %	Damage threshold @10ns	Polarization
CI-3-405-HP-1	405	3	>30dB	>85%	3.5J/cm ²	PBS
CI-5-405-HP-1	405	5	>30dB	>90%	3.5J/cm ²	PBS
CI-3-532-HP-1	532	3	>30dB	>90%	3.5J/cm ²	PBS
CI-5-532-HP-1	532	5	>30dB	>90%	3.5J/cm ²	PBS
CI-3-633-HP-1	633	3	>30dB	>90%	3.5J/cm ²	PBS
CI-5-633-HP-1	633	5	>30dB	>90%	3.5J/cm ²	PBS
CI-3-780-HP-1	780	3	>30dB	>90%	3.5J/cm ²	PBS
CI-5-780-HP-1	780	5	>30dB	>90%	3.5J/cm ²	PBS
CI-3-850-HP-1	850	3	>30dB	>90%	3.5J/cm ²	PBS
CI-5-850-HP-1	850	5	>30dB	>90%	3.5J/cm ²	PBS
CI-3-920-HP-1	920	3	>30dB	>90%	3.5J/cm ²	PBS
CI-5-920-HP-1	920	5	>30dB	>90%	3.5J/cm ²	PBS
CI-3-980-HP-1	980	3	>30dB	>90%	3.5J/cm ²	PBS
CI-5-980-HP-1	980	5	>30dB	>90%	3.5J/cm ²	PBS
CI-3-1030-HP-1	1030	3	>30dB	>90%	5J/cm ²	PBS
CI-5-1030-HP-1	1030	5	>30dB	>90%	5J/cm ²	PBS
CI-8-1030-HP-1	1030	8	>30dB	>90%	5J/cm ²	PBS
CI-10-1030-HP-1	1030	10	>30dB	>90%	5J/cm ²	PBS
CI-3-1064-HP-1	1064	3	>30dB	>90%	5J/cm ²	PBS
CI-5-1064-HP-1	1064	5	>30dB	>90%	5J/cm ²	PBS
CI-8-1064-HP-1	1064	8	>30dB	>90%	5J/cm ²	PBS
CI-10-1064-HP-1	1064	10	>30dB	>90%	5J/cm ²	PBS
CI-12-1064-HP-1	1064	12	>30dB	>90%	5J/cm ²	PBS
CI-25-1064-HP-1	1064	25	>30dB	>90%	5J/cm ²	PBS
CI-40-1064-HP-1	1064	40	>30dB	>90%	5J/cm ²	PBS

Note: 1. The recommended operating temperature is 10-30°C.2. Other wavelengths available.